

2017 SUMMER EDITION

DISCOVER

PRAIRIE STATE COLLEGE SUMMER CREDIT COURSE SCHEDULE

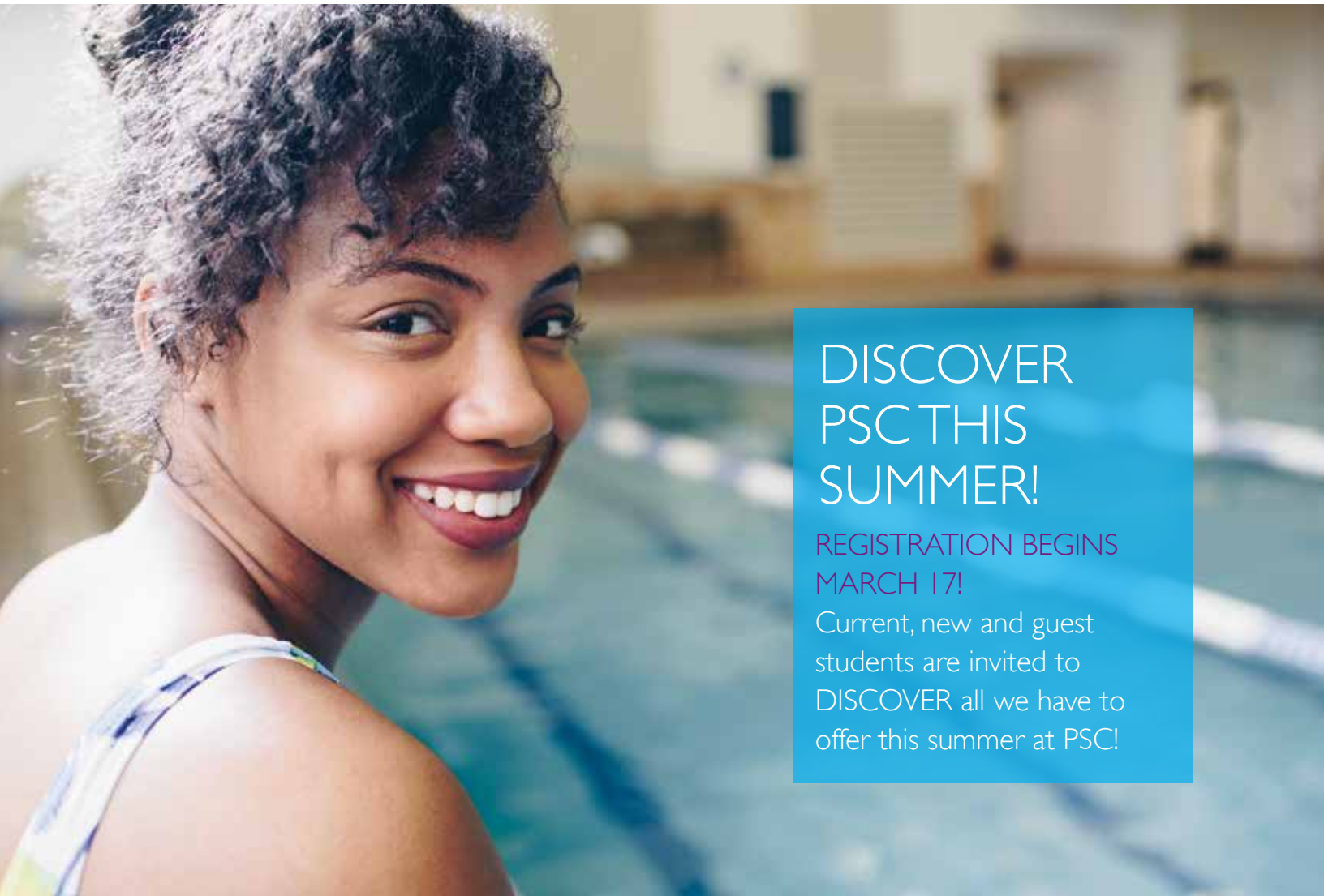
PSC

**MATH
IS
MATH**
NO MATTER
WHERE
YOU TAKE IT



**GREAT EDUCATION
FOR A FRACTION
OF THE COST**
Pg. 24

**Take
a summer
course and
transfer
your credits!**



DISCOVER PSC THIS SUMMER!

REGISTRATION BEGINS
MARCH 17!

Current, new and guest
students are invited to
DISCOVER all we have to
offer this summer at PSC!

REGISTRATION ►

CURRENT STUDENTS: Priority registration for current students begins March 15. Login to WebAdvisor to secure your seat for the summer semester.

NEW STUDENTS: Complete an enrollment application online, or in person in Enrollment Services on the main campus. Visit prairiestate.edu/start for the steps on getting started at PSC.

GUEST STUDENTS: Students from four-year colleges and universities who are home for the summer can take classes at PSC for a fraction of the cost and transfer the credits back to your home school.

SAVE TIME AND MONEY BY TAKING A COURSE AT PSC THIS SUMMER!
Visit prairiestate.edu/summeronly to find out how.*

*Only your advisor (or the registrar) can guarantee the transfer of credits as it applies to your particular degree/major.

Table of Contents

Audit Policy	8
Calendar	4
Cooperative Agreements	8
Course Cancellations	8
Credit Course Listings	13
Desire2Learn	12
Dropping a Course	8
Employment In-District	8
Enrollment Residency Information	8
Financial Aid	9
First-Year Student Orientation	4
How to Enroll	5
How to Read the Schedule	12
ITR Help Desk	12
Maps and Directions	3
Payment Options	7
Placement Testing	11
PSC Alert	3
Refunds	7
Registration Information	4
Scholarships	10
Student IDs	3
Tuition	7
Veterans Benefits	10
WebAdvisor	12
Withdrawal Policy	7

Para información en español visite la página en de Internet prairiestate.edu/enroll.

Locations

For each class, the location is indicated by a code.

4-digit number (for example, 2506)

- PSC Main Campus
- CC** Conference Center
PSC Main Campus
- FH** Fitness and Health Complex
Franciscan Fitness Center
100 W. 197th Pl., Chicago Heights
- GSU** Governors State University
1 University Parkway, University Park
- L** Health Tech Center
PSC North Campus
- K** K Building
PSC North Campus
- MAC** PSC Matteson Area Center
4821 Southwick Dr., Matteson
- T** Tech Wing
PSC Main Campus
- TWL** Training, Warehouse, Logistics
191 S. Halsted St., Chicago Heights

Policies and Procedures

Release of Information about Students

For students 18 years or older or those attending an institution of post-secondary education, the Family Educational Rights and Privacy Act (FERPA) forbids the college from releasing any information (for example, registration, records, payment, grades, classroom performance, attendance) to anyone other than the student unless the student has signed a “Release of Confidentiality Form” or the parent provides IRS proof of the student as a dependent. The form is available in Counseling and Academic Advising, Enrollment Services, the Business Office, and the Financial Aid Office. For additional information on FERPA, please see the college catalog.

Mission Statement

Prairie State College fosters collaborative relationships that empower students to achieve their education and career goals. The college embraces its diversity, nurtures life-long learning, and supports community and economic development.

Maps and Directions

Visit prairiestate.edu, and click on Maps and Directions.

PSC Alert

Register to receive important information regarding weather closings, college emergencies, and more on your cell phone, home phone, and/or email. To sign up, visit prairiestate.edu/PSCAlert. Follow the instructions on the page and choose the ways you wish to be notified. It only takes a few minutes. To receive alerts by cell phone, it must be capable of receiving text messages. Carrier charges may apply to text messages. Email or voicemail options are also available.

Student IDs

All students are issued identification cards. There is no charge for the first card, and replacement cards are \$5. The ID card must be carried at all times. For more information, call (708) 709-3640.

Smoke/Tobacco Free at PSC

Smoking is prohibited on campus. For more information on our Smoke/Tobacco free campus, visit prairiestate.edu/student-life/health-promotion/clean-air.aspx. Resources are available, as well as specific information regarding the law.

Summer 2017 Calendar

Registration

- **Priority registration** (in-person and online) for current students: March 15
- **Open registration** (in-person and online) for all students: March 17
- **Schedule changes:** May 30-31

Summer 2017 Credit Courses

First Session

Begins May 30, ends July 20

Final day for class registration: June 14

Last day to declare an audit: June 14

Last day to withdraw for a W grade: July 6

Financial Aid census date: June 15

Second Session

Begins June 12, ends Aug. 3

Final day for class registration: June 27

Last day to declare an audit: June 27

Last day to withdraw for a W grade: July 20

Financial Aid census date: June 28

Last day to apply to summer graduation

July 1

Late Registration Procedures— Credit Classes Only

The following guidelines apply to students who wish to register for credit classes after the schedule change period has ended and classes have begun to meet:

- If the class is not full, students do **not** need an instructor's consent to register during **the first two days of the term** (up until 11:59 pm of second day). This applies to all standard session classes—16-week, 14-week, 12-week, first and second 8-week, and first and second session summer classes.
- Students do not need instructor's consent to register if a class **has not yet met**. (For example, if a class meets Thursday, Friday, or Saturday, students may register up to the time the class begins if space is available).
- **Online:** To start an online class, log in to Desire2Learn and select your class. Your class begins on the start date listed in the schedule.
- All students who register (with or without the instructor's consent) the day following the first meeting of a class will be charged a late registration fee of \$20.

Payment

- Financial aid application priority deadline is on or before March 1.
- Payment due or payment plan must be set up by May 9.

See page 7 for payment information.

College Closings

- Memorial Day: May 29
- Independence Day: July 4
- Please note: PSC will be closed on Fridays from May 26 through Aug. 11.
- Check prairiestate.edu for updates

Non-Credit Classes

Flip schedule for non-credit class information.

Census date information is on page 8.

First-Year Student Orientation

All new students are required to attend an orientation session. For a complete listing of dates and to register, visit prairiestate.edu and select Orientations, Student from A-Z Index.

Vehicle Assistance

The PSC Police Department offers motorist assistance, including jump starts, lockouts, or motorist emergency notifications. For more information, call (708) 709-7777.

Parking

All vehicles parked on campus must be registered and have a parking decal. Visit prairiestate.edu and select Parking from the A-Z index.

How to Enroll

New Student for Credit Courses

Step 1. Apply

Complete an enrollment application online at prairiestate.edu/enroll, or in person in Enrollment Services. Allow three days for processing the online application.

Step 2. Placement Test or ACT Scores

Students need to take the Placement Test for transfer programs and for correct placement in prerequisite courses, or bring in ACT scores that are within the past five years. The Placement Test determines your placement in English, math, and reading. No appointment is necessary. Contact the testing center for times at (708) 709-3558, or visit prairiestate.edu/compass.

Step 3. Transcripts

Send your official high school transcripts* to Enrollment Services.

Step 4. Advisor

Meet with an advisor to select courses and complete the registration form. No appointment is necessary.

Step 5. Register

Register in person for courses in Enrollment Services.

Step 6. Payment

Pay tuition and fees in the Business Office, online through e-Cashier, or have a PSC financial aid award letter.

*Official transcripts are not required for enrollment at PSC. It is recommended that official transcripts be received and evaluated as soon as possible to ensure adequate advising and progress toward a degree or certificate.

Transfer Student for Credit Courses

Step 1. Apply

Complete an enrollment application online at prairiestate.edu, or complete one in person in Enrollment Services. Allow three days for processing the online application.

Step 2. Transcripts

Send your official transcripts* and request an evaluation of official transcripts to determine how courses will transfer to PSC.

Step 3. Placement Test, ACT Scores, or College Transcripts

Take the Placement Test or bring in ACT scores that are within the past five years, or present unofficial transcripts to an advisor for course placement. The Placement Test determines your placement in English, math, and reading. No appointment is necessary. Contact the testing center for times at (708) 709-3558, or visit prairiestate.edu/placement. Unofficial transcripts can be used to determine a preliminary placement and determine the need for placement testing.

Step 4. Advisor

Meet with an advisor to select courses and complete the registration form. No appointment is necessary.

Step 5. Register

Register in person for courses in Enrollment Services.

Step 6. Payment

Pay tuition and fees in the Business Office, online through e-Cashier, or have a PSC financial aid award letter.

How Will You Pay For Your Courses?

If considering financial aid, complete the Free Application for Federal Student Aid (FAFSA) today. This is the first step in the process. All documents requested by the PSC Financial Aid Office must be submitted before your eligibility can be determined. If considering a payment plan, review the payment schedule at prairiestate.edu under the Apply, Register, Pay section.

How to Enroll

Current Student

Note: Students will not be able to register for or drop courses under 100 level through WebAdvisor.

Step 1. Meet with an academic advisor

Discuss your academic program and select your courses.

Step 2. Register for courses

Use this schedule to find the courses most convenient and appropriate for you. Fill out the registration form and register in Enrollment Services or register online.

Step 3. Payment

Pay tuition and fees in the Business Office, online through e-Cashier, or have a PSC financial aid award letter.

Step 4. Report address and phone number changes

Visit Enrollment Services. ID required.

Special Admissions Programs

The Dental Hygiene, Nursing, Paramedicine, and Surgical Technology programs have special admission requirements. For more information, contact Enrollment Services at (708) 709-3516.

Equal Opportunity/Affirmative Action

PSC does not discriminate on the basis of race, religion, color, age, disability, ancestry, marital status, military discharge status, national origin, veteran status, sexual orientation, or other non-merit factors in educational programs or employment practices. Inquiries may be directed to the Affirmative Action Officer.

Tuition for Senior Citizens

Learn more at prairiestate.edu/apply-reg-pay.

Online Registration

Students who have completed at least one semester at PSC can register online. Note: Courses below 100 level and certain programs cannot be registered for online.

Step 1. Select your courses

Select your courses from this schedule or from the PSC website by clicking first on WebAdvisor and then View Class Schedule.

Step 2. Register

Click on WebAdvisor, and select Log in to WebAdvisor at the top of the screen where you will enter your user ID and password. If you cannot remember your user ID and password, select an option under WebAdvisor Help or call the Help Desk at (708) 709-7999.

Step 3. Print

To print your schedule, click file, then print.

Step 4. Payment

Pay tuition and fees in the Business Office, online through e-Cashier, or have a PSC financial aid award letter.

Student with Bachelor's Degree or Higher

Step 1. Apply

Complete an enrollment application in person or online at prairiestate.edu. If you have questions about the enrollment process, contact Enrollment Services at (708) 709-3516.

Step 2. Transcripts

Send official transcripts* and request an evaluation to determine completion of course prerequisites. Unofficial transcripts can be used for initial enrollment. Official transcripts should be received and evaluated by the end of the first term of enrollment.

Step 3. Register

Complete registration form and enroll in courses.

Step 4. Payment

Pay tuition and fees in the Business Office, online through e-Cashier, or have a PSC financial aid award letter.

*Official transcripts are not required for enrollment at PSC. It is recommended that official transcripts be received and evaluated as soon as possible to ensure adequate advising and progress toward a degree or certificate.

Payment and Refund Information

Tuition and fees

Information about tuition and fees for credit courses available at prairiestate.edu under Apply, Register, Pay

Tuition categories:

- **In-District Residents and Employees of In-District Companies**
- **Out-of-District Residents**
- **Out-of-State/International Students**

Registration fee: \$10 each semester (non-refundable)

Late Registration fee: \$20 if you register after a course begins

Note: Laboratory fees are additional.

PSC reserves the right to change tuition and fees without notice.

Payment Options

Registration is not final and enrollment is not guaranteed in any course until all costs have been paid in full. Payment arrangements must be made by May 9. You are held responsible for payment unless you drop courses in Enrollment Services by the dates listed on the refund table. If you register on May 10 or later, your payment is due on the day you register.

Payment for tuition and fees is accepted in the Business Office. Payment options include:

1. Cash

Cash payments accepted in person only.

2. Personal check

Make checks payable to Prairie State College. Driver's license or State ID required for all checks.

3. Visa, Discover, or MasterCard

4. Debit Card

5. Payment in Full

If you want to pay your full balance online, sign on to WebAdvisor and click on "Make a Payment." PSC will now accept Visa, Discover, and MasterCard payments online.

6. Tuition Payment Plan

PSC utilizes the services of Nelnet e-Cashier for payment plans. The non-refundable charge for setting up the plan is \$30 and is processed separately. If a down payment is required, it is processed immediately. For more information, visit prairiestate.edu/apply-reg-pay.

You also may pay your tuition in full with a credit card online using Nelnet e-Cashier for no additional fee. Scholarships or financial aid refunds will not be refunded to a credit card. Refunds will be paid by PSC to the account that you designate through Higher One. For more information see prairiestate.edu/tuitionrefunds.

If you have applied for financial aid, you may be eligible to postpone your first payment. For more information, contact the Financial Aid Office at (708) 709-3735.

Bookstore Payment Plan

Eligible students may defer part of the cost of book purchase that total at least \$300 and have a Nelnet agreement in place for their tuition. The payment terms for the remaining balance are the same as the payment plan.

Third-Party Payments

The college accepts payments by third parties on student accounts, but any refund due is made directly to the student.

Returned Checks

A service fee of \$25 is charged for each check that is returned by the bank for non-payment. The college also will not accept another check from your account for one year. If checks are not made good within two weeks of notification, your account may be placed with a credit agency for collection. If your check is returned due to stop payment or account closed, the college will not accept checks on your account for 10 years.

Refunds

Refunds for credit classes are administered through PSC's partnership with BankMobile. Each PSC student has or will receive a PSC One Card in the mail at the primary address on file with PSC. Students can then use this card to make a choice on how they choose to receive their refund. More information is available at refundselection.com.

Course Withdrawal Policy

The college has a strict policy governing credit course withdrawal. Students are responsible for withdrawing from credit courses by the withdrawal deadline. See the academic calendar on page 4 for applicable deadline dates. Students who request to be administratively withdrawn from a course after the deadline are required to submit a formal, written appeal to the Counseling and Academic Advising Center. Appeals should only be submitted in the event of extreme emergency situations, with adequate support documentation explaining why a student was unable to withdraw from the course before the deadline. Appeals are reviewed by the Dean of Student Development and Campus Life. For classes less than 8-weeks, see prairiestate.edu/tuitionrefunds.

Re-Enrollment Fee

Students dropped for nonpayment can re-register for courses. Re-registration will be permitted based upon course availability. Students will be billed a \$25 fee.

Dropping a Course

If you decide to stop attending a credit course you must officially withdraw from the course. Students can drop a course in Enrollment Services or on WebAdvisor. Courses dropped online using WebAdvisor must be done by course refund date. Courses dropped after the refund period will result in a grade of W and must be done in person. See the academic calendar on page 4 for applicable deadline dates. For more information, contact Enrollment Services at (708) 709-3516.

Audit Policy

If you are not concerned with receiving college credit, you may take a course as an auditor. No letter grade is given, and you will not receive academic credit. Consult the registration calendar for audit deadlines. For information, call Enrollment Services at (708) 709-3516.

Students who wish to audit a course must meet all course prerequisites and comply with the following procedure:

1. Register for the course in question.
2. Pay all applicable tuition and fees.
3. Complete an audit request (student petition) form, available in Enrollment Services. Some exclusions apply.

Course Cancellations

The college may change course offerings during the registration period. Occasionally, a course is cancelled if there are not enough students enrolled. If this happens, the college will do everything possible to notify you before the first class meeting. You will have the option of registering for another course or receiving a full refund.

Cooperative Agreements

If your local Illinois community college district does not offer a program that is offered by PSC, you may be eligible to receive assistance from your district's community college. You must obtain a "Cooperative Agreement" form from your local community college. If approved by your community college, you must present the signed form to PSC at registration, and you will be billed at PSC's in-district rates. For more information, contact Enrollment Services at (708) 709-3516.

Course Attendance

You must attend the courses you register for at PSC. If you register for a course and never attend, you run the risk of being dropped from the course(s). Course attendance is important to academic success. If you will be unable to attend any courses in which you enrolled, you must drop them. Refer to the academic calendar and the college refund table for applicable dates. All of this information is located at prairiestate.edu. Use the A-Z index where information is arranged alphabetically.

Refunds for Credit Courses

You may be eligible for a full or partial refund of your tuition and student fees. Registration fees and some lab fees are non-refundable. The refund is based on your withdrawal date. Visit prairiestate.edu/tuition-refunds for the current refund table.

The Financial Aid Census Date May Impact You

The financial aid census date records the number of credit hours taken by a student. Any courses that are added or dropped after the census date will not result in an adjustment to the financial aid award. Courses added after the census date could result in the student owing the college money. This means that students **MUST** review their schedules to ensure they are officially enrolled in each course they are attending. Students withdrawing from all courses, or students who stop attending all courses, will receive a reduction in the original award amount even after the census date.

Enrollment Residency Information

Enrollment residency information can be viewed at prairiestate.edu/enroll.

Employment In-District

View our policy for tuition for in-district employees by visiting prairiestate.edu and selecting Tuition and Fees from A-Z Index.

Financial Aid

How to Apply

The financial aid process can take up to 30 days.

1. Complete the Free Application for Federal Student Aid (FAFSA)

The school code for PSC is 001640. Apply online at fafsa.gov. Note: The previous year's federal income tax return is needed to complete the FAFSA. Students can link to the IRS website to download their federal income tax information. Students who do not download the information from the IRS will have to obtain a tax transcript from the IRS and submit it to the Financial Aid Office for verification.

The FAFSA form is available at studentaid.ed.gov. Complete the form and mail it in for processing. Or, call (800) 433-3243 or (319) 337-5665 to request a form. The hearing impaired should call (800) 730-8913. Using the non-electronic version of the FAFSA adds additional time to the process. Note: Your PSC admissions application must also be completed to being the financial aid process.

2. Notification from Department of Education

If PSC's school code is listed in your FAFSA, the college will receive your report in about 14 days. If you completed a paper FAFSA, the notification takes longer.

3. Notification from PSC

Once PSC receives your FAFSA from the Department of Education, a letter will be mailed indicating the documents needed to complete your financial aid file.

4. Complete Rights and Responsibilities form and other required documents

The Rights and Responsibilities form along with other forms is available at prairiestate.edu. Bring all documents to the Financial Aid Office.

5. Determination Letter

Once all documents are submitted to the Financial Aid Office, an award or ineligible letter is sent. Continuing students also can view the award letter in the student's WebAdvisor account.

Additional Information

All information must be submitted to the PSC Financial Aid Office by the deadline to ensure completion before payment due date. Students unable to meet the deadline are encouraged to complete their financial aid file, but are responsible for paying for classes by the payment due date.

Priority deadline for each semester:

May 1 - fall; Oct. 1 - spring; March 1 - summer

Withdrawals and Attendance

Title IV funds are awarded assuming the student will attend school for the entire period for which the assistance is awarded. If a student withdraws, he/she may no longer be eligible for the full amount of Title IV funds. If a recipient withdraws from school after beginning attendance, the amount of a Title IV grant or loan earned by the student must be determined. If PSC has disbursed more aid than the student has earned, the aid needs to be returned.

Non Attendance Resulting in "FW" Grades

If you stop attending a credit course, you must officially withdraw from the course. If you neglect to officially withdraw and complete the semester with all "FW" grades, the midpoint of the semester is held as the last date of attendance. This may result in ineligibility for a full award and the student owing a balance to the college.

Special Circumstances

Financial aid eligibility may be re-evaluated due to changes in income. If you have experienced a reduction of income in comparison to the income stated on your FAFSA, visit the Financial Aid Office.

Available Grants and Loans

For students who qualify, the following federal and/or state programs may provide financial assistance:

- Federal Direct Plus Loan
- Federal Direct Student Loan
- Federal Direct Unsubsidized Loan
- MAP Grant
- Pell Grant
- Supplemental Educational Opportunity Grant (FSEOG)
- Work Study

Student Loans

Loans are available for students and/or parents. This type of funding **must be** repaid according to the terms specified by the loan program.

In order to obtain a loan, a student must complete a FAFSA, receive an award letter or ineligible letter, and have an entrance interview with the loan advisor. Loan interviews are by appointment only.

Financial Aid

Scholarships

Scholarships are another source of funding. The PSC Foundation offers many scholarships for PSC students. Complete the online scholarship application available at prairiestate.edu/foundation. The PSC Foundation awards more than \$75,000 in scholarships annually to students who are not fully funded through any other source.

Financial Aid

Satisfactory Requirements

You must maintain academic progress as evidenced by passing (grades of A, B, C, or D) at least 67 percent of the courses you attempt within your certificate or degree and obtaining an overall 2.0 cumulative grade point average in all PSC coursework. If you receive a grade of I, F, W, FW, or Audit, you have not completed the course. You may take a maximum of 90 credit hours to be eligible for financial aid. This includes credit hours transferred to PSC from other institutions and all PSC coursework. Academic progress is reviewed each semester.

How to Ensure Your Financial Aid Request is Processed Promptly:

- **Apply early** – You can submit your FAFSA as early as Jan. 1. Early submission increases the chances of your being eligible for additional grants.
- **Complete a PSC application** – New students must complete a PSC admissions application in order for the college to access your FAFSA.
- **Update your PSC address** - Information regarding your financial aid application will be mailed to the address on record with the college. A wrong address may mean a delay.
- **Use the data retrieval tool on FAFSA** - The tool used to retrieve your tax information from the Internal Revenue Service (IRS), decreasing the need for an official IRS transcript.
- **Ensure accuracy of information** - Errors on your FAFSA or other documents can cause a delay with the determination of your financial aid eligibility.
- **Submit requested documents as soon as possible** – Submit requested documents immediately, otherwise there may be a further delay in determining financial aid eligibility.*

*Additional documents may be requested. The need for additional documents cannot be determined until the initial documents are reviewed.

Veterans and Military

Veterans receive one-on-one advising throughout the admissions process and continued support throughout their academic career at PSC. Veterans are eligible for early registration. Services extend to all service members regardless of when they served or whether it was in the active, reserve, or National Guard component.

The Student Veterans Center provides academic and social support to veterans with an emphasis on graduation and successful integration into the college. At the center, PSC student veterans can study and socialize with fellow veterans and find information about the services available to them at PSC and in the community.

It is located in room 1240 of the main building. The center is accessible and offers many amenities for veterans including free printing. For more information, call (708) 709-3567 or email vetcenter@prairiestate.edu.

Veterans Benefit Programs

The federal and state governments have several programs available to assist veterans, spouses, and their dependents in paying for college and reaching their educational and vocational goals. Programs include:

- Illinois Veterans Grant (IVG)
- Illinois National Guard Grant (ING)
- Illinois MIA/POW Scholarship (for spouses and dependents)
- Montgomery GI BILL Educational Benefits (Chapter 30, Post 9/11, Chapter 1606 and 1607)
- Department of Veteran's Affairs Vocational Rehabilitation (Chapter 31)
- Department of Veteran's Affairs Dependents Educational Assistance Program (Chapter 35)

Veterans who are not sure what benefits they qualify for should contact the Student Veterans Center coordinator, or consult the U.S. Department of Veterans Affairs website at gibill.va.gov/. Educational Counselors also are available at the Department of Veterans Affairs at (888) 442-4551 or call an ISAC Call Center Representative at (800) 899-ISAC(4722).

Placement Testing

Preparing for the placement test pays off with financial savings, and also in time savings. Take the test seriously. Prepare and do the best you can. Placement in college level courses is important.

Testing Schedule

For a complete schedule, visit prairiestate.edu and select Assessment and Placement from the A-Z index.

What is the Placement Test?

The placement test is a computerized and written assessment test that confirms your readiness to take college-level classes by determining your prior level of achievement in English, math, and reading.

What sections are in the Placement Test?

The placement test is comprised of three sections: math, reading, and English.

Do I have to take the Placement Test?

Yes. All new students entering college for the first time are required to take the placement test and meet with an advisor prior to registering for classes. SAT or ACT scores may be used in place of the placement test. Some restrictions apply (See below).

If I have taken the ACT do I have to take the Placement Test?

ACT scores may be used in place of the placement test. An ACT score of 22+ in reading **and** a 17+ in English places a student directly into English 101. An ACT reading score of 22+ exempts a student from having to take the reading placement test. Math ACT placement is determined by a student's academic program. Students should meet with an academic advisor for more information.

Should I study for the Placement Test?

Yes. Students should study before taking the placement test because the results determine course placement. The placement test determines whether developmental courses are required, or whether you can register immediately for college-level classes. Developmental courses do not count as college credit. A higher score on the placement test may lead to placement in college-level courses.

The Day of the Test

Location: Testing Center Room 2505

- A photo ID is required to take the test.
- A PSC student ID number is required to take the test.
- The test takes an average student up to three hours to complete. Please allow yourself enough time to successfully complete the exam. Note: The test can be broken into multiple sessions and taken on different days.
- Children and guests are not allowed in the Testing Center.

After the Test

Within a week, your scores will be forwarded to the Counseling and Academic Advising Center, where you will meet with a member of the advising team to review your scores and select your classes.

How to Read the Schedule

Course/Section	Course Name	Credit Hours	Time	Day	Date	Location	Instructor
PHOTO 171-FI	Introduction to Photography	3	10:00am-03:40pm	MW	05/27 07/17	4120	Slagle
M - Monday	T - Tuesday	W - Wednesday	TH - Thursday	F - Friday	S - Saturday	SU - Sunday	

First Summer Session Course Listings (May 30-July 20)

Second Summer Session Course Listings (June 12-Aug. 3)

WebAdvisor

- Search schedule online
- View real-time seat count
- Register for courses
- Print unofficial transcripts
- Receive your grades
- View financial aid award
- Check account balance

Visit prairiestate.edu, and click on the WebAdvisor logo.

Login to WebAdvisor

You must be a current student in good academic and financial standing registering for courses 100 level and above to use WebAdvisor for registration.

For first time users:

User ID = Combination of first initial of first name, full last name, and a sequence number. Please note the User ID is the same for e-mail, Desire2Learn, and WebAdvisor.

Password = Date of Birth MMDDYY. You will be prompted to change your password once you're logged in.

To use WebAdvisor to search for courses

Note: You do not have to be logged into WebAdvisor to search for courses.

- Select the Term (i.e., Spring 2016)
- Select the Subject (i.e., BUS)
- AND/OR choose course days, times, instructor, or other options
- Click on Submit

This will return class information including available courses, classroom, time, instructor, and seat count.

For assistance on using WebAdvisor, visit the Contact Us link located in the WebAdvisor menu or call (708) 709-7999.

All of the online hybrid and many of the face-to-face courses at PSC use Desire2Learn to deliver and supplement the course. You can access Desire2Learn by visiting prairiestate.edu and clicking on the Desire2Learn logo on the right side of the screen.

To access Desire2Learn

Username = This is the same username you use to login to your PSC e-mail account

Password = Your 6-digit birth date in MMDDYY format (for example, use 063090 for June 30, 1990).

To find your course

Once you are logged in, you will see a list of courses located under My Courses in the center of the screen. Click on the appropriate course link to access the course.

Your instructor will give you information on what types of materials will be in Desire2Learn for your particular course. This can include the syllabus, notes, grades, tests, and more. For assistance on using Desire2Learn, contact the PSC Help Desk at (708) 709-7999 or email helpdesk@prairiestate.edu.

ITR Help Desk

The ITR Help Desk provides students, faculty, and staff assistance with PSC equipment or software. Please have your Student ID number when you call or come by our office, located just off the atrium at the main campus. For more information, call (708) 709-7999.

Summer 2017 Credit Course Listings

African American Studies

ENG-215 African American Literature (IAI: H3910D) Prerequisite: ENG 101 with a grade of C or better

ENG 215-SI	African American Literature	3	09:00am-11:50am	MW	06/12	08/03	2502	Staff
------------	-----------------------------	---	-----------------	----	-------	-------	------	-------

Anthropology

ANTHR-222 Intro to Cultural & Social Anthropology (IAI: S1901N) Prerequisite: Placement into ENG 099 or higher

ANTHR 222-FI	Intr/Cult-Soc Anth	3	12:30pm-03:20pm	MW	05/31	07/20		Calgaro
ANTHR 222-SI	Intr/Cult-Soc Anth	3	09:30am-11:50am	MW	06/13	08/03		Calgaro

Art

ART-129 Art Appreciation (IAI: F2900) Prerequisite: Placement into ENG 099 or higher

ART 129-INF1	Art Appreciation	3			05/30	07/20	Online	Rinaldi
	\$20 Internet course fee							
ART 129-INF2	Art Appreciation	3			05/30	07/20	Online	Shields
	\$20 Internet course fee							
ART 129-INF3	Art Appreciation	3			05/30	07/20	Online	Rinaldi
	\$20 Internet course fee							
ART 129-INF4	Art Appreciation	3			05/30	07/20	Online	Shields
	\$20 Internet course fee							
ART 129-INS1	Art Appreciation	3			06/12	08/03	Online	Shields
	\$20 Internet course fee							
ART 129-FI	Art Appreciation	3	09:00am-11:45am	TTH	05/30	07/20	4165	Staff
ART 129-SI	Art Appreciation	3	12:30pm-03:15pm	TTH	06/13	08/03	4165	Staff

Automotive Services

AUTO-102 Automotive Engines Prerequisite:AUTO 101 \$45 lab fee

AUTO 102-FI	Automotive Engines	4	05:00pm-07:30pm	M	06/05	07/20	T120	
	Lab		05:00pm-09:45pm	TTH	05/30	07/20	T120	Staff

AUTO-202 Automotive Brake Systems Prerequisite:AUTO 101 \$45 lab fee

AUTO 202-FI	Auto Brake Systems	4	08:30am-02:05pm	TTH	05/30	07/20	T120	Gumushian
-------------	--------------------	---	-----------------	-----	-------	-------	------	-----------

Biological Science

BIOL-100 General Education Biology (IAI: L1900L) Prerequisite: Placement into ENG 099 or higher Placement into MATH 090 or higher or completion of MATH 085 with a C or better \$17 lab fee

BIOL 100-FI	General Education Biology	4	08:00am-10:50am	TTH	05/30	07/20	3180	
	Lab		11:00am-12:50pm	TTH	05/30	07/20	3145	Adam
BIOL 100-F2	General Education Biology	4	01:30pm-04:20pm	TTH	05/30	07/20	3140	
	Lab		04:30pm-06:20pm	TTH	05/30	07/20	3145	Staff
BIOL 100-SI	General Education Biology	4	05:00pm-07:50pm	MW	06/12	08/02	3180	
	Lab		08:00pm-09:50pm	MW	06/12	08/02	3145	Staff

BIOL-105 Environmental Biology (IAI: L1905) Prerequisite: Placement into ENG 099 or higher Placement into MATH 090 or higher or completion of MATH-085 with a C or better

BIOL 105-SI	Environmental Biology	3	07:00pm-09:50pm	TTH	06/13	08/03	3140	Staff
-------------	-----------------------	---	-----------------	-----	-------	-------	------	-------

BIOL-111 Cellular and Molecular Biology (IAI: BIO910) Prerequisite: High school biology or BIOL 100 or BIOL 108 or BIOL 112 within the past 5 years with a grade of C or better; placement into ENG 099 or higher; placement into MATH 090 or completion of MATH 085 with a C or better

\$17 lab fee

BIOL 111-F1	Cellular and Molecular Biology	4	08:00am-09:50am	TWTH	05/30	07/20	3136	
Lab			10:00am-11:50am	TWTH	05/30	07/20	3155	H-Lutterodt
BIOL 111-F2	Cellular and Molecular Biology	4	12:30pm-02:20pm	TWTH	05/30	07/20	3136	
Lab			02:30pm-04:20pm	TWTH	05/30	07/20	3155	H-Lutterodt
BIOL 111-S1	Cellular and Molecular Biology	4	06:00pm-07:50pm	TWTH	06/13	08/03	3136	
Lab			08:00pm-09:50pm	TWTH	06/13	08/03	3155	Staff

BIOL-112 Organismal Biology (IAI: BIO910 L1910L) Prerequisite: Placement into ENG 099 or higher Placement into MATH 090 or higher or completion of MATH 085 with a grade of C or better \$17 lab fee

BIOL 112-S1	Organismal Biology	4	12:30pm-02:20pm	MTW	06/12	08/02	3180	
Lab			02:30pm-04:20pm	MTW	06/12	08/02	3145	Hung

BIOL-211 Microbiology Prerequisite: Biol 111 with C or better or Chem 105 with a C or better within the past 5 years \$17 lab fee

BIOL 211-F1	Microbiology	4	08:00am-09:50am	TWTH	05/30	07/20	4130	
Lab			10:00am-11:50am	TWTH	05/30	07/20	4150	Kelly
BIOL 211-F2	Microbiology	4	12:30pm-02:20pm	TWTH	05/30	07/20	4180	
Lab			02:30pm-04:20pm	TWTH	05/30	07/20	4150	Kelly
BIOL 211-S1	Microbiology	4	06:00pm-07:50pm	TWTH	06/13	08/03	4130	
Lab			08:00pm-09:50pm	TWTH	06/13	08/03	4150	Staff

BIOL-221 Human Anatomy and Physiology I Prerequisite: BIOL 111 with a C or better in past 5 years; or CHEM 105 with a C or better in past 5 years \$17 lab fee



BIOL 221-F1	Human Anatomy & Physiology I	4	08:00am-10:50am	TTH	05/30	07/20	4180	
Lab			11:00am-12:50pm	TTH	05/30	07/20	4160	Nelson
BIOL 221-F2	Human Anatomy & Physiology I	4	10:00am-12:50pm	TTH	05/30	07/20	4130	
Lab			01:30pm-03:20pm	TTH	05/30	07/20	4160	Staff
BIOL 221-S1	Human Anatomy & Physiology I	4	08:00am-10:50am	MWV	06/12	08/02	4180	
Lab			11:00am-12:50pm	MWV	06/12	08/02	4160	Staff
BIOL 221-S2	Human Anatomy & Physiology I	4	05:00pm-07:50pm	MWV	06/12	08/02	4180	
Lab			08:00pm-09:50pm	MWV	06/12	08/02	4160	Staff

BIOL-222 Human Anatomy and Physiology II Prerequisite: BIOL 221 within the past 5 years with a C or better \$17 lab fee

BIOL 222-F1	Human Anatomy & Physiology II	4	01:00pm-03:50pm	TTH	05/30	07/20	4190	
			04:00pm-05:50pm	TTH	05/30	07/20	4160	Nelson
BIOL 222-F2	Human Anatomy & Physiology II	4	05:00pm-07:50pm	TTH	05/30	07/20	4180	
			08:00pm-09:50pm	TTH	05/30	07/20	4160	Staff
BIOL 222-S1	Human Anatomy & Physiology II	4	01:00pm-03:50pm	MW	06/12	08/02	4190	
			04:00pm-05:50pm	MW	06/12	08/02	4160	Staff

Business


BUS-101 Introduction to Business Prerequisite: Placement into ENG 099 or higher

 BUS 101-INF1	Introduction to Business	3			05/30	07/20	Online	Schusler
	\$20 Internet course fee							
 BUS 101-INS1	Introduction to Business	3			06/12	08/03	Online	Berlinski
	\$20 Internet course fee							
BIUS 101-F1	Introduction to Business	3	09:00am-12:50pm	MWV	05/31	07/05	2501	Berlinski
	6 week class							


BUS-131 Financial Accounting (IAI: BUS903) Prerequisite: Placement into ENG 099 or higher \$10 lab fee

BIUS 131-F1	Financial Accounting	4	09:00am-12:50pm	TTH	05/30	07/20	3165	Ivancic
-------------	----------------------	---	-----------------	-----	-------	-------	------	---------

BUS-132 Managerial Accounting (IAI: BUS904) Prerequisite: BUS 131 \$10 lab fee

 BUS 132-INF1	Managerial Accounting	3			05/30	07/20	Online	Ivancic
	\$20 Internet course fee							

BUS-201 Business Law Prerequisite: Placement into ENG 099 or higher

 BUS 201-INF1	Business Law	3			05/30	07/20	Online	Schusler
	\$20 Internet course fee							

BUS-240 Elementary Statistics (IAI: M1902 BUS901) Prerequisite: MATH 151 with a C or better or qualifying score on Math Placement Test

BUS 240-F1	Elementary Statistics	4	10:00am-11:50am	MTWTH	05/30	07/20	3290	Staff
BUS 240-INS1	Elementary Statistics	4			06/12	08/03	Online	Garant

\$20 Internet course fee

BUS-241 Prin of Management

BUS 241-INF1	Principles of Management	3			05/30	07/20	Online	Schusler
--------------	--------------------------	---	--	--	-------	-------	--------	----------

\$20 Internet course fee

BUS-251 Principles of Marketing

BUS 251-INF1	Principles of Marketing	3			05/30	07/20	Online	Schusler
--------------	-------------------------	---	--	--	-------	-------	--------	----------

\$20 Internet course fee

Chemistry**CHEM-110 General Chemistry I** (IAI: P1902L CHM911) Prerequisite: High school chemistry with a C or better and MATH 095 with a C or better or placement in MATH 151 \$32 lab fee

CHEM 110-F1	General Chemistry I	5	09:00am-12:50pm	TTH	05/30	07/20	4280	
	Lab		02:00pm-05:00pm	TTH	05/30	07/20	4265	Staff
CHEM 110-F2	General Chemistry I	5	09:00am-12:50pm	TTH	05/30	07/20	4280	
	Lab		02:00pm-05:00pm	TTH	05/30	07/20	4255	Staff

CHEM-130 General Chemistry II (IAI: CHM912) Prerequisite: CHEM 110 with a C or better \$32 lab fee

CHEM 130-F1	General Chemistry II	5	09:00am-12:50pm	MW	05/31	07/19	4280	
	Lab		02:00pm-05:00pm	MW	05/31	07/19	4265	Staff

Communication**COMM-101 Principles of Communication** (IAI: C2900) Prerequisite: Placement into ENG 099 or higher.

COMM 101-INS1	Prin Communication	3			06/12	08/03	Online	Trunnell
---------------	--------------------	---	--	--	-------	-------	--------	----------

\$20 Internet course fee. Professor consent please email dtrunnell@prairiestate.edu

COMM 101-F1	Prin Communication	3	09:00am-11:50am	MW	05/31	07/20	2612	Green
COMM 101-F2	Prin Communication	3	12:30pm-03:20pm	MW	05/31	07/20	2612	Staff
COMM 101-F3	Prin Communication	3	09:00am-11:50am	TTH	05/30	07/20	2612	Schwarz
COMM 101-S1	Prin Communication	3	12:30pm-03:20pm	MW	06/12	08/03	4200	Staff
COMM 101-S2	Prin Communication	3	09:00am-11:50am	TTH	06/13	08/03	4200	Trunnell
COMM 101-S3	Prin Communication	3	06:30pm-09:20pm	TTH	06/13	08/03	2612	Staff

Criminal Justice**CJ-101 Introduction to Criminal Justice** (IAI: CRJ901) Prerequisite: Placement into ENG 099 or higher

CJ 101-INF1	Intro/Criminal Justice	3			05/30	08/03	Online	Fazzini
-------------	------------------------	---	--	--	-------	-------	--------	---------

\$20 Internet course fee

CJ-102 Introduction to Criminology (IAI: CRJ912) Prerequisite: Placement into ENG 099 or higher

CJ 102-INF1	Intro/Criminology	3			05/30	08/03	Online	O Keefe
-------------	-------------------	---	--	--	-------	-------	--------	---------

\$20 Internet course fee

Dental Hygiene

Registration for the following dental hygiene classes is limited to students officially admitted to the PSC program.

DH-101 Histology Prerequisite: Acceptance into the Dental Hygiene program Consent of program coordinator \$150 health course fee

DH 101-F1	Histology	2	08:30am-10:30am	T	05/30	07/20	L120	Braun
DH 101-F2	Histology	2	01:30pm-03:30pm	T	05/30	07/20	L120	Braun

DH-107 Fundamentals of Dental Hygiene Prerequisite: Acceptance into the Dental Hygiene program Consent of program coordinator \$50 lab fee \$150 health course fee

DH 107-F1	Fund Dent Hyg	2	10:30am-12:30pm	T	05/30	07/20	L120	
	Lab		08:00am-11:50am	W	05/31	07/20	L120	Gorbitz/ Braun
DH 107-F2	Fund Dent Hyg	2	10:30am-12:30pm	T	05/30	07/20	L120	
	Lab		01:00pm-04:50pm	W	05/31	07/20	L120	Gorbitz/ Braun

DH-201 Clinical Dental Hygiene III Prerequisite: Acceptance into the Dental Hygiene program DH 109 \$150 lab fee \$225 health course fee

DH 201-F1	Clinical Dental Hygiene III	3	12:00pm-12:50pm	MT	05/30	07/20	L120	Braun/ Gorbitz
			08:30am-11:50am	M	06/05	07/20	L120	
			01:00pm-04:20pm	T	05/30	07/20	L120	
DH 201-F2	Clinical Dental Hygiene III	3	12:00pm-12:50pm	MT	05/30	07/20	L120	Braun/ Gorbitz
			08:30am-11:50am	T	05/30	07/20	L120	
			01:00pm-04:20pm	M	06/05	07/20	L120	

Early Childhood Education

ECED-103 Health Safety and Nutrition Prerequisite: Placement into ENG 099 or higher

ECED 103-INF1	Hlth Safety & Nutr	3			05/30	07/20	Online	Fogarty
---------------	--------------------	---	--	--	-------	-------	--------	---------

\$20 Internet course fee

ECED-120 Child Family and Community Prerequisite: Placement into ENG 099 or higher

ECED 120-F1	Child Family & Comm	3	05:00pm-07:50pm	MW	05/31	07/20	2504	Jiles
-------------	---------------------	---	-----------------	----	-------	-------	------	-------

Economics

ECON-201 Macroeconomic Principles (IAI: S3901) Prerequisite: Placement into ENG 099 or higher

ECON 201-INF1	Macroeconomic Principles	3			05/30	07/20	Online	Tinwala
---------------	--------------------------	---	--	--	-------	-------	--------	---------

\$20 Internet course fee. See WebAdvisor for schedule.

ECON 201-INF2	Macroeconomic Principles	3			05/30	07/20	Online	Tinwala
---------------	--------------------------	---	--	--	-------	-------	--------	---------

\$20 Internet course fee. See WebAdvisor for schedule.

ECON 201-F1	Macroeconomic Principles	3	09:00am-11:50am	TTH	05/30	07/20	3140	Staff
-------------	--------------------------	---	-----------------	-----	-------	-------	------	-------

ECON-202 Microeconomic Principles (IAI: S3902) Prerequisite: ECON 201

ECON 202-INF1	Microeconomic Principles	3			05/30	07/20	Online	Tinwala
---------------	--------------------------	---	--	--	-------	-------	--------	---------

\$20 Internet course fee. See WebAdvisor for schedule.

ECON 202-INF2	Microeconomic Principles	3			05/30	07/20	Online	Tinwala
---------------	--------------------------	---	--	--	-------	-------	--------	---------

\$20 Internet course fee. See WebAdvisor for schedule.

Education

ED-101 Child Growth and Development Prerequisite: Placement into ENG 099 or higher

ED 101-INF1	Child Growth & Dev	3			05/30	07/20	Online	Fogarty
-------------	--------------------	---	--	--	-------	-------	--------	---------

\$20 Internet course fee.

Electricity/Electronics (see Industrial Electricity or Computer Electronics Technology)

Emergency Medical Services

Financial aid recipients should check with the Financial Aid Office prior to enrolling in EMS 101. Some financial aid programs will not pay for this course. Eighteen years of age and COMPASS reading score of 78 or better or placement into ENG 101.

EMS-101 Emergency Medical Technician Prerequisite: \$65 lab fee

EMS 101-F1	Emerg Medical Tech	7	09:00am-12:30pm	MTWTH	05/30	07/20	L118	Biasella
------------	--------------------	---	-----------------	-------	-------	-------	------	----------

English

Students are required to take the Placement Test test prior to placement in English. Students whose scores indicate they need additional work before taking college-level English courses are placed in ENG 098, ENG 099-A, or ENG 099-B, depending on their score. Students who have a Placement Test reading score of 75 or higher are placed in ENG 099-B, a 3 credit hour course that focuses on developmental composition. Those whose scores fall between 50 and 74 must enroll in ENG 099-A, a 6 credit hour course that focuses on developmental composition and critical inquiry. To learn more about the Placement Test, contact the Counseling and Advising Center.

ENG-098 Foundations of College Writing Prerequisite: qualifying score on the English placement test

ENG 098-S1	Foundations of College Writing	4	09:00am-12:50pm	MW	06/12	08/03	3138	Staff
------------	--------------------------------	---	-----------------	----	-------	-------	------	-------

ENG-099 Strategies of College Reading & Writing Prerequisite: ENG 098 and RDG 098 with a grade of C or better or qualifying score on the English and Reading Placement Test

ENG 099-ALPFI	Strategies/Coll Rdg & Writing	3	09:00am-11:50am	MW	05/31	07/20	4140	Staff
ENG 099-SI	Strategies/Coll Rdg & Writing	3	09:00am-11:50am	TTH	06/13	08/03	2502	Staff

ENG-101 Composition I (IAI: C1900) Prerequisite: ENG 099 with a grade of C or better; or qualifying score on the English placement test

ENG 101-ALPFI	Composition I	3	09:00am-11:50am	TTH	05/30	07/20	3200	Staff
---------------	---------------	---	-----------------	-----	-------	-------	------	-------

Dual enrollment required with ENG 099 ALPFI

ENG 101-INF1	Composition I	3			05/30	07/20	Online	Staff
ENG 101-INS1	Composition I	3			06/12	08/03	Online	Staff
ENG 101-F1	Composition I	3	09:00am-11:50am	MW	05/31	07/20	3200	Staff
ENG 101-F2	Composition I	3	09:00am-11:50am	TTH	05/30	07/20	3200	Staff
ENG 101-F3	Composition I	3	07:00pm-09:50pm	MW	05/31	07/20	3200	Staff
ENG 101-F4	Composition I	3	12:30pm-03:20pm	MW	05/31	07/20	2502	Spencer
ENG 101-S1	Composition I	3	09:00am-11:50am	MW	06/12	08/03	3230	Staff
ENG 101-S2	Composition I	3	09:00am-11:50am	TTH	06/13	08/03	Staff	Staff
ENG 101-S3	Composition I	3	12:30pm-03:20pm	TTH	06/13	08/03	Staff	Staff

ENG-102 Composition II (IAI: C1901R) Prerequisite: ENG 101 with a grade of C or qualifying score on English placement test

ENG 102-INF1	Composition II	3			05/30	07/20	Online	N-Dema
--------------	----------------	---	--	--	-------	-------	--------	--------

\$20 Internet course fee

ENG 102-INF2	Composition II	3			05/30	07/20	Online	N-Dema
--------------	----------------	---	--	--	-------	-------	--------	--------

\$20 Internet course fee

ENG 102-INS1	Composition II	3			06/12	08/03	Online	Nicholas
--------------	----------------	---	--	--	-------	-------	--------	----------

\$20 Internet course fee

ENG 102-F1	Composition II	3	09:00am-11:50am	MW	05/31	07/20	2508	Staff
------------	----------------	---	-----------------	----	-------	-------	------	-------

ENG 102-F2	Composition II	3	12:30pm-03:20pm	MW	05/31	07/20	2508	Staff
------------	----------------	---	-----------------	----	-------	-------	------	-------

ENG 102-S1	Composition II	3	09:00am-11:50am	MW	06/12	08/03	3240	Staff
------------	----------------	---	-----------------	----	-------	-------	------	-------

ENG 102-S2	Composition II	3	09:00am-11:50am	TTH	06/13	08/03	2508	Staff
------------	----------------	---	-----------------	-----	-------	-------	------	-------

ENG 102-S3	Composition II	3	12:30pm-03:20pm	TTH	06/13	08/03	2508	Staff
------------	----------------	---	-----------------	-----	-------	-------	------	-------

ENG-212 American Literature II (IAI: H3914) Prerequisite: ENG 101 with a grade of C

ENG 211-INF1	Amer Literature I	3			05/30	07/20	Online	Cotch
--------------	-------------------	---	--	--	-------	-------	--------	-------

\$20 Internet course fee

ENG-215 African American Literature (IAI: H3910D) Prerequisite: ENG 101 with a grade of C or better

ENG 215-S1	African American Literature	3	09:00am-11:50am	MW	06/12	08/03	2502	Staff
------------	-----------------------------	---	-----------------	----	-------	-------	------	-------

ENG-243 Non-Western Literature in English (IAI: H3908N) Prerequisite: ENG 101 with a grade of C

ENG 243-INS1	Non-Western Literature in Eng	3			06/12	08/03	Online	Evans
--------------	-------------------------------	---	--	--	-------	-------	--------	-------

\$20 Internet course fee

Fire Science

FST-213 Fire Service Instructor II Prerequisite: FST 212 with a grade of C or better Documented affiliation with a fire department

FST 213-INF1	Fire Service Instructor II	3			05/30	07/20	Online	Atwood
--------------	----------------------------	---	--	--	-------	-------	--------	--------

One on-campus demo required. Final exam is OSFM test, in-person, room L-116.

\$20 Internet course fee

Health

HLTH-101 Health and Wellness Prerequisite: Placement into ENG 099 or higher

HLTH 101-INF1	Health & Wellness	2			05/30	07/20	Online	Dowell
---------------	-------------------	---	--	--	-------	-------	--------	--------

\$20 Internet course fee

HLTH 101-INF2	Health & Wellness	2			05/30	07/20	Online	Dowell
---------------	-------------------	---	--	--	-------	-------	--------	--------

\$20 Internet course fee

HLTH-105 General Medical Terminology Prerequisite: Placement into ENG 099 or higher

HLTH 105-F1	General Medical Terminology	3	09:00am-11:50am	TTH	05/30	07/20	L114	Musser
-------------	-----------------------------	---	-----------------	-----	-------	-------	------	--------

Heating, Ventilation, Air Conditioning, and Refrigeration

HVAC-123 Electrical Controls for HVAC \$45 lab fee

HVAC 123-01	Electrical Controls for HVAC	3	05:30pm-09:50pm	T	05/30	08/01	T192	Thompson
-------------	------------------------------	---	-----------------	---	-------	-------	------	----------

HVAC-125 Advanced Electrical Controls Prerequisite: HVAC 123 with a C or better \$45 lab fee

HVAC 125-01	Advanced Electrical Controls	3	10:00am-02:20pm	T	05/30	08/01	T192	Thompson
-------------	------------------------------	---	-----------------	---	-------	-------	------	----------

HVAC-130 Special Topics in HVAC Prerequisite: Consent of instructor \$30 lab fee

HVAC 130-F1	Special Topics in HVAC	2	10:00am-01:50pm	TTH	05/30	07/20	T195	Vlietstra
-------------	------------------------	---	-----------------	-----	-------	-------	------	-----------

HVAC 130-F2	Special Topics in HVAC	2	06:00pm-09:50pm	TTH	05/30	07/20	T195	Vlietstra
-------------	------------------------	---	-----------------	-----	-------	-------	------	-----------

HVAC-131 EPA 608 Prerequisite: HVAC 120 and HVAC 121 with a grade of C or better

HVAC 131-F1	EPA 608	1	06:00pm-09:50pm	TH	06/01	07/20	T192	Vlietstra
-------------	---------	---	-----------------	----	-------	-------	------	-----------

HVAC-298 HVAC Seminar Prerequisite: 18 credits in HVAC or HVACR with a C or better

HVAC 298-01	HVAC Seminar	1			05/30	08/03	OTH	Vlietstra
-------------	--------------	---	--	--	-------	-------	-----	-----------

Instructor consent required

HVAC-299 HVAC Internship

HVAC 299-01	HVAC Internship	2			05/30	08/03	OTH	Vlietstra
-------------	-----------------	---	--	--	-------	-------	-----	-----------

Instructor consent required

History

HIST-201 U.S. History: 1492 to 1877 (IAI: S2900) Prerequisite: Placement into ENG 099 or higher

HIST 201-INF1	U.S. History: 1492-1877	3			05/30	07/20	Online	Pariseau
---------------	-------------------------	---	--	--	-------	-------	--------	----------

\$20 Internet course fee

HIST 201-S1	U.S. History: 1492-1877	3	09:00am-11:50am	TTH	06/13	08/03	3214	Staff
-------------	-------------------------	---	-----------------	-----	-------	-------	------	-------

HIST-202 U.S. History: 1877 to Present (IAI: S2901) Prerequisite: Placement into ENG 099 or higher

HIST 202-INF1	U.S. History: 1877-Present	3			05/30	07/20	Online	Pariseau
---------------	----------------------------	---	--	--	-------	-------	--------	----------

\$20 Internet course fee

HIST 202-S1	U.S. History: 1877-Present	3	09:00am-11:50am	MW	06/12	08/03	3170	Staff
-------------	----------------------------	---	-----------------	----	-------	-------	------	-------

Humanities

HUMAN-101 Comparative Religions (IAI: H5904N) Prerequisite: Placement into ENG 099 or higher

HUMAN 101-INF1	Compar Religions	3			05/30	07/20	Online	La Turner
----------------	------------------	---	--	--	-------	-------	--------	-----------

\$20 Internet course fee

HUMAN 101-INF2	Compar Religions	3			05/30	07/20	Online	La Turner
----------------	------------------	---	--	--	-------	-------	--------	-----------

\$20 Internet course fee

HUMAN 101-INS1	Compar Religions	3			06/12	08/03	Online	Bobbe
----------------	------------------	---	--	--	-------	-------	--------	-------

\$20 Internet course fee

HUMAN 101-INS2	Compar Religions	3			06/12	08/03	Online	Bobbe
----------------	------------------	---	--	--	-------	-------	--------	-------

\$20 Internet course fee

HUMAN 101-F1	Compar Religions	3	09:00am-11:50am	TTH	05/30	07/20	4285	Staff
--------------	------------------	---	-----------------	-----	-------	-------	------	-------

HUMAN 101-S1	Compar Religions	3	09:00am-11:50am	MW	06/12	08/03	2503	Staff
--------------	------------------	---	-----------------	----	-------	-------	------	-------

Industrial Electrician

ELECT-113 Print Reading for Electricians \$10 lab fee

ELECT 113-IN	Print Reading/Electricians	2			05/30	08/03	Online	Karras
--------------	----------------------------	---	--	--	-------	-------	--------	--------

\$20 Internet course fee

ELECT 113-F1	Print Reading/Electricians	2	06:00pm-09:40pm	MW	05/30	06/21	3120	Mendoza
--------------	----------------------------	---	-----------------	----	-------	-------	------	---------

ELECT-114 National Electrical Code

ELECT 114-IN	National Elec Code	2			05/30	08/03	Online	Krauss
--------------	--------------------	---	--	--	-------	-------	--------	--------

\$20 Internet course fee

ELECT 114-F1	National Elec Code	2	06:00pm-09:40pm	TTH	05/30	06/22	3110	Staff
--------------	--------------------	---	-----------------	-----	-------	-------	------	-------

ELECT-120 Electrical Safety \$10 lab fee

ELECT 120-IN	Electrical Safety	2			05/30	08/03	Online	Karras
--------------	-------------------	---	--	--	-------	-------	--------	--------

\$20 Internet course fee

ELECT-141 Conduit Bending - Thinwall \$20 lab fee

ELECT 141-FI	Conduit Bending - Thinwall	2	06:00pm-09:40pm	MW	05/30	06/21	3110	Lamarre
--------------	----------------------------	---	-----------------	----	-------	-------	------	---------

ELECT-150 Preventive Maintenance - Electrical Prerequisite: ELECT-108 with a C or better \$10 lab fee

ELECT 150-INFI	Preventative Maintenance-Elect	2			05/30	07/20	Online	Roach
----------------	--------------------------------	---	--	--	-------	-------	--------	-------

\$20 Internet course fee

ELECT-298 Electrical Seminar Prerequisite: Consent of instructor required

ELECT 298-INIS	Electrical Seminar	1			05/30	08/03	Online	Karras
----------------	--------------------	---	--	--	-------	-------	--------	--------

\$20 Internet course fee.

ELECT-299 Electrical Internship Prerequisite: Consent of instructor required

ELECT 299-INIS	Electrical Interns	2			05/30	08/03	Online	Karras
----------------	--------------------	---	--	--	-------	-------	--------	--------

\$20 Internet course fee

Information Technology

IT-140 Introduction to Operating Systems Prerequisite: Placement into ENG 099 or higher; ITAPP 101 with a grade of C or better recommended

\$10 lab fee

IT 140-INFI	Intro to Operating Systems	3			05/30	07/20	Online	Dennis
-------------	----------------------------	---	--	--	-------	-------	--------	--------

\$20 Internet course fee. See WebAdvisor for schedule.

IT-205 Ethics in Information Technology Prerequisite: Placement into ENG 099 or higher

IT 205-INFI	Ethics in Information Technology	2			05/30	07/20	Online	Dennis
-------------	----------------------------------	---	--	--	-------	-------	--------	--------

\$20 Internet course fee. See WebAdvisor for schedule.

IT-Applications

ITAPP-101 Introduction to Computers (IAI: BUS902) Prerequisite: Placement into ENG 099 or higher; ITOFS 100 Keyboarding recommended

\$10 lab fee

ITAPP 101-INFI	Intro to Computers	3			05/30	07/20	Online	Manuel
----------------	--------------------	---	--	--	-------	-------	--------	--------

\$20 Internet course fee.

ITAPP 101-FI	Intro to Computers	3	11:00am-01:50pm	TTH	05/30	07/20	3160	Washington
--------------	--------------------	---	-----------------	-----	-------	-------	------	------------

IT-Programming

ITPRG-154 C#.NET Programming Prerequisite: Placement into ENG 099 or higher IT 140 and ITPRG 103 with a C or better recommended equivalent recommended

\$10 lab fee

ITPRG 154-HYFI	C#.NET Programming	3	06:00pm-09:40pm	W	05/31	07/19	3195	Manuel
----------------	--------------------	---	-----------------	---	-------	-------	------	--------

Online coursework required

IT-Web Development

ITWEB-101 Web Page Fundamentals Prerequisite: Placement into ENG 099 or higher

\$10 lab fee

ITWEB 101-INFI	Web Page Fundamentals	3			05/30	07/20	Online	Phillips
----------------	-----------------------	---	--	--	-------	-------	--------	----------

\$20 Internet course fee

Mathematics

MATH-085 Computational Skills II Prerequisite: MATH 080 with min grade C or better or qualifying score on the math placement test

MATH 085-FI	Computational Skills II	4	05:00pm-06:50pm	MTWTH	05/30	07/20	3285	Staff
MATH 085-SI	Computational Skills II	4	10:00am-11:45am	MTWTH	06/12	08/03	3235	Staff

MATH-090 Elementary Algebra Prerequisite: MATH 085 with min grade C or better or qualifying score on the math placement test.

All sections use Hawkes Learning Software.. Computer homework is required. \$5 lab fee

MATH 090-FI	Elementary Algebra	4	08:00am-10:25am	MTWTH	05/30	07/20	4225	Staff
MATH 090-SI	Elementary Algebra	4	07:00pm-09:20pm	MTWTH	06/12	08/03	3290	Staff

MATH-095 Intermediate Algebra Prerequisite: MATH 090 with a C grade or better or qualifying score on the math placement test.

All sections use Hawkes Learning Software. Computer homework is required. \$5 lab fee

MATH 095-FI	Intermediate Algebra	4	11:00am-12:50pm	MTWTH	05/30	07/20	4225	Staff
MATH 095-SI	Intermediate Algebra	4	05:00pm-06:45pm	MTWTH	06/12	08/03	4225	Staff

MATH-112 General Education Mathematics (IAI: M1904) Prerequisite: MATH 095 and 096 with at least a C; or MATH 095 and one year high school geometry both with at least a C; or a qualifying score on the math placement test.

MATH 112-FI	General Education Mathematics	3	08:00am-09:25am	MTWTH	05/30	07/20	2608	Staff
MATH 112-SI	General Education Mathematics	3	01:30pm-02:50pm	MTWTH	06/12	08/03	2625	Staff

MATH-115 General Education Statistics (IAI: M1902) Prerequisite: MATH 095 and 096 with at least a C; or MATH 095 and one year high school geometry both with at least a C; or a qualifying score on the math placement test

MATH 115-INSI	General Education Statistics	3			06/12	08/03	Online	Garant
\$20 Internet course fee								
MATH 115-SI	General Education Statistics	3	06:00pm-07:20pm	MTWTH	06/12	08/03	2608	Staff

MATH-151 College Algebra Prerequisite: MATH 095 and 096 with at least a C or MATH 095 and one year high school geometry both with at least a C; or a qualifying score on the math placement test. All sections use Hawkes Learning Software. Computer homework is required. \$5 lab fee

MATH 151-INSI	College Algebra	4			06/12	08/03	Online	Garant
\$20 Internet course fee								
MATH 151-FI	College Algebra	4	01:00pm-02:50pm	MTWTH	05/30	07/20	3290	Staff
MATH 151-SI	College Algebra	4	05:00pm-06:45pm	MTWTH	06/12	08/03	3290	Staff

MATH-153 Probability and Statistics (IAI: M1902) Prerequisite: MATH 151 with a grade of C or better or qualifying score on math placement test

MATH 153-FI	Probability and Statistics	4	10:00am-11:50am	MTWTH	05/30	07/20	3290	Staff
MATH 153-INSI	Probability and Statistics	4			06/12	08/03	Online	Garant
\$20 Internet course fee								

MATH-155 Finite Mathematics (IAI: M1906) Prerequisite: MATH 151 with a grade of C or better or qualifying score on math placement test

MATH 155-FI	Finite Mathematics	4	05:00pm-06:50pm	MTWTH	05/30	07/20	4270	Staff
-------------	--------------------	---	-----------------	-------	-------	-------	------	-------

MATH-157 Calculus for Business & Social Science (IAI: M1900B) Prerequisite: MATH 151 with a grade of C or better or qualifying score on math placement test

MATH 157-FI	Calculus/Business & Soc Sci	4	07:00pm-08:50pm	MTWTH	05/30	07/20	4270	Staff
-------------	-----------------------------	---	-----------------	-------	-------	-------	------	-------

MATH-165 Pre-Calculus Prerequisite: MATH 151 with a grade of C or better or qualifying score on math placement test

MATH 165-FI	Pre-Calculus	5	01:00pm-03:25pm	MTWTH	05/30	07/20	2608	Staff
-------------	--------------	---	-----------------	-------	-------	-------	------	-------

MATH-171 Calculus With Analytic Geometry I (IAI: M1900I MTH901) Prerequisite: MATH 165 with a grade of C or better or qualifying score on the math placement test

MATH 171-FI	Calculus/Analytic Geometry I	5	09:00am-11:25am	MTWTH	05/30	07/20	4270	Marks
-------------	------------------------------	---	-----------------	-------	-------	-------	------	-------

MATH-210 Discrete Mathematics (IAI: M1905 CS915) Prerequisite: MATH 151 with a grade of C or qualifying score on the math placement test

MATH 210-FI	Discrete Mathemati	3	12:00pm-01:25pm	MTWTH	05/30	07/20	4270	Marks
-------------	--------------------	---	-----------------	-------	-------	-------	------	-------

Mechanical Technology

MT-220 Metallurgy - Ferrous

MT 220-FI	Metallurgy - Ferrous	2	06:00pm-09:40pm	TH	06/01	07/20	T191	Wolfe
-----------	----------------------	---	-----------------	----	-------	-------	------	-------

Music

MUSIC-130 Music Appreciation (IAI: F1900) Prerequisite: Placement into ENG 099 or higher

MUSIC 130-SI	Music Appreciation	3	09:00am-11:50am	MW	06/12	08/03	3275	Staff
--------------	--------------------	---	-----------------	----	-------	-------	------	-------

MUSIC-132 American Music (IAI: F1904) Prerequisite: Placement into ENG 099 or higher

MUSIC 132-SI	American Music	3	09:00am-11:50am	TTH	06/13	08/03	3275	Staff
--------------	----------------	---	-----------------	-----	-------	-------	------	-------

MUSIC-152 Jazz Ensemble I Prerequisite: Consent of instructor									
MUSIC 152-F10WK	Jazz Ensemble I	I	07:00pm-10:00pm	T	05/30	08/01	K105	Staff	
MUSIC-153 Jazz Ensemble II Prerequisite: MUSIC 152									
MUSIC 153-F10WK	Jazz Ensemble II	I	07:00pm-10:00pm	T	05/30	08/01	K105	Staff	
MUSIC-252 Jazz Ensemble III Prerequisite: Consent of instructor									
MUSIC 252-F10WK	Jazz Ensemble III	I	07:00pm-10:00pm	T	05/30	08/01	K105	Staff	
MUSIC-253 Jazz Ensemble IV Prerequisite: Consent of instructor									
MUSIC 253-F10WK	Jazz Ensemble IV	I	07:00pm-10:00pm	T	05/30	08/01	K105	Staff	

Nursing Assistant

Students enrolled in NURS 100 must be 16 years of age, have a Social Security card, and register in person. Students are also required to have a background check, physical examination, drug screen, proof of immunizations, and a 2-step TB test prior to entering the clinical facility. Financial aid recipients should check with the Financial Aid Office prior to enrolling in NURS 100. Some financial aid programs will not pay for this course.

COMPASS reading score of 60 or above required to register.

NURS-100 Nurse Assistant Training Prerequisite: COMPASS reading score of 60 or above Students required to have background check drug screen proof of immunizations and 2-step TB test prior to entering the clinical facility. \$40 lab fee

NURS 100-F1	Nurse Assist Train	7	05:45pm-10:00pm	MWTH	05/31	07/20	4220		
			07:00am-02:45pm	F	06/02	07/20	HOME	Staff	
NURS 100-F2	Nurse Assist Train	7	05:45pm-10:00pm	MWTH	05/31	07/20	4220		
			07:00am-02:45pm	S	06/03	07/20	HOME	Staff	
NURS 100-F3	Nurse Assist Train	7	08:00am-02:45pm	TTH	05/30	07/20	4220		
			07:00am-02:45pm	W	05/31	07/20	HOME	Staff	
NURS 100-F4	Nurse Assist Train	7	08:00am-02:45pm	TTH	05/30	07/20	4220		
			07:00am-02:45pm	W	05/31	07/20	HOME	Staff	

Nursing

Registration for nursing classes, other than NURS 100, is limited to students officially admitted to the PSC program.

NURS-110 Seminar in Nursing Practice Prerequisite: NURS-102(16719) \$40 lab fee \$150 health course fee

NURS 110-F1	Sem Nursing Practice	2	10:00am-12:00pm	T	05/30	07/20	4240	Zroskie	
-------------	----------------------	---	-----------------	---	-------	-------	------	---------	--

NURS-111 Nursing As a Profession Prerequisite: Acceptance into nursing program \$75 health course fee

 NURS 111-IN01	Nursing As a Profession	1			05/30	08/03	Online	Schwartz	
	\$20 Internet course fee								
 NURS 111-IN02	Nursing As a Profession	1			05/30	08/03	Online	Schwartz	
	\$20 Internet course fee								
 NURS 111-IN03	Nursing As a Profession	1			05/30	08/03	Online	Coleman	
	\$20 Internet course fee								

Philosophy

PHILO-101 Introduction to Philosophy (IAI: H4900) Prerequisite: Placement into ENG 099 or higher

PHILO 101-S1	Intro/Philosophy	3	09:00am-11:50am	TTH	06/09	07/31	4125	Staff	
--------------	------------------	---	-----------------	-----	-------	-------	------	-------	--

PHILO-202 Ethics (IAI: H4904) Prerequisite: Placement into ENG 099 or higher

PHILO 202-F1	Ethics	3	09:00am-11:50am	MW	05/27	07/17	4125	Staff	
--------------	--------	---	-----------------	----	-------	-------	------	-------	--

PHILO-203 Introduction to Logic (IAI: H4906) Prerequisite: Placement into ENG 099 or higher

 PHILO 203-INF1	Intro to Logic	3			05/26	07/17	Online	Hammond	
	\$20 Internet course fee								
 PHILO 203-INF2	Intro to Logic	3			05/26	07/17	Online	Hammond	
	\$20 Internet course fee								

Photography

PHOTO-171 Introduction to Photography Prerequisite: Placement into ENG 099 or higher \$40 lab fee

PHOTO 171-F1	Introduction to Photography	3	10:00am-03:40pm	MW	05/27	07/17	4120	Slagle	
--------------	-----------------------------	---	-----------------	----	-------	-------	------	--------	--

PHOTO-292 Photo Workshop: Special Topics Prerequisite: PHOTO 171 and 6 additional credits in PHOTO \$40 lab fee

PHOTO 292-F1IS	Photo Workshop: Spec Topics	4	10:00am-03:40pm	MW	05/27	07/17	4120	Slagle	
----------------	-----------------------------	---	-----------------	----	-------	-------	------	--------	--

No computer? We have many available for your use free of charge on campus.

Physical Education

PE-101 Physical Fitness I \$20 lab fee

PE 101-01 Physical Fitness I 1 05/30 08/03 T136 Kraay
Face to face orientation by appointment call (708) 709-3779

PE-102 Physical Fitness II Prerequisite: PE 101 \$20 lab fee

PE 102-01 Physical Fitness II 1 05/30 08/03 T136 Kraay

PE-103 Physical Fitness III Prerequisite: PE 102 \$20 lab fee

PE 103-01 Physical Fitness III 1 05/30 08/03 T136 Kraay

PE-104 Physical Fitness IV Prerequisite: PE 103 \$20 lab fee

PE 104-01 Physical Fitness IV 1 05/30 08/03 T136 Kraay

PE-105 Aerobics I \$20 lab fee

PE 105-01 Aerobics I 1 09:00am-10:20am TTH 05/30 08/03 T130 Flores
Yoga

PE 105-02 Aerobics I 1 12:00pm-01:20pm MW 05/31 08/03 T130 Ruschak
Pilates

PE-106 Aerobics II \$20 lab fee

PE 106-01 Aerobics II 1 01:30pm-02:50pm MW 05/31 08/03 T130 Flores
Kickboxing

PE-107 Aerobics III \$20 lab fee

PE 107-01 Aerobics III 1 07:00am-07:55am MWTH 05/31 08/03 FHPOOL Flores
Aqua aerobics

PE 107-02 Aerobics III 1 06:00pm-06:55pm MWF 05/31 08/03 FHPOOL Hightower
Aqua aerobics

PE-108 Aerobics IV \$20 lab fee

PE 108-01 Aerobics IV 1 07:00am-08:20am MW 05/31 08/03 T130 Kraay
Indoor cycling

PE 108-02 Aerobics IV 1 11:00am-12:20pm TTH 05/30 08/03 T130 Hightower
Boot Camp aerobics

PE-163 Golf \$20 lab fee

PE 163-F1 Golf 1 10:00am-11:50am MW 05/31 07/20 T130 Campea

PE-164 Tennis \$20 lab fee

PE 164-F1 Tennis 1 05:00pm-06:50pm MW 05/31 07/20 T130 Staff

Physical Education/Exercise Science

PES-225 Weight Training: Theory/Application

PES 225-F1 Weight Training: Theory/App 2 04:00pm-05:50pm MW 05/31 07/20 T146 Razo

PES-235 Athletic Training Techniques Prerequisite: Consent of program coordinator \$20 lab fee

PES 235-F1 Athletic Training Techniques 3 05:30pm-08:20pm TTH 05/30 07/20 T146 Graham

PES-250 Kinesiology Prerequisite: Consent of program coordinator; completion of BIOL 108 or BIOL 221 and 222

PES 250-01 Kinesiology 3 06:00pm-08:40pm MW 05/31 08/03 T146 Eaheart

Physical Science

PHYS-112 Earth Science (IAI: P1905L) Prerequisite: Placement into ENG 099 or higher \$30 lab fee

PHYS 112-F1 Earth Science 4 08:30am-11:50am TWTH 05/30 07/20 3270 Staff

Physics

PHYSI-120 College Physics I (IAI: P1900L) Prerequisite: MATH 151 with a grade of C or better \$17 lab fee

PHYSI 120-FI	College Physics I	4	09:00am-11:30am	MTWTH	05/30	07/20	3260	Salami
--------------	-------------------	---	-----------------	-------	-------	-------	------	--------

PHYSI-130 College Physics II Prerequisite: PHYSI 120 \$17 lab fee

PHYSI 130-FI	College Physics II	4	05:00pm-07:30pm	MTWTH	05/30	07/20	3260	Staff
--------------	--------------------	---	-----------------	-------	-------	-------	------	-------

PHYSI-230 University Physics III (IAI: PHY914) Prerequisite: PHYSI 210 and MATH 173 with a grade of C \$18 lab fee

PHYSI 230-FI	University Physics III	4	01:00pm-03:50pm	MTWTH	05/30	07/20	3260	Salami
--------------	------------------------	---	-----------------	-------	-------	-------	------	--------

Political Science

POLSC-140 Intro to U.S. Government and Politics (IAI: S5900) Prerequisite: Placement into ENG 099 or higher

☞	POLSC 140-INF1	Intro to U.S. Gove	3			05/30	07/20	Online	Schott
---	----------------	--------------------	---	--	--	-------	-------	--------	--------

\$20 Internet course fee

☞	POLSC 140-INSI	Intro to U.S. Gove	3			05/30	08/03	Online	Schott
---	----------------	--------------------	---	--	--	-------	-------	--------	--------

\$20 Internet course fee

Psychology

PSYCH-101 Introduction to Psychology (IAI: S6900) Prerequisite: Placement into ENG 099 or higher

☞	PSYCH 101-INF1	Intro to Psych	3			05/30	07/20	Online	DeSousa
---	----------------	----------------	---	--	--	-------	-------	--------	---------

\$20 Internet course fee

☞	PSYCH 101-INF2	Intro to Psych	3			05/30	07/20	Online	DeSousa
---	----------------	----------------	---	--	--	-------	-------	--------	---------

\$20 Internet course fee

☞	PSYCH 101-INSI	Intro to Psych	3			06/12	08/03	Online	Staff
---	----------------	----------------	---	--	--	-------	-------	--------	-------

\$20 Internet course fee

	PSYCH 101-F1	Intro to Psych	3	09:00am-11:50am	MW	05/31	07/20	2600	Staff
--	--------------	----------------	---	-----------------	----	-------	-------	------	-------

	PSYCH 101-S1	Intro to Psych	3	09:00am-11:50am	MW	06/12	08/03	2604	Staff
--	--------------	----------------	---	-----------------	----	-------	-------	------	-------

PSYCH-102 Human Growth and Development: Life-Span (IAI: S6902) Prerequisite: Placement into ENG 099 or higher.

	PSYCH 102-F1	Human Growth and Development	3	12:30pm-03:20pm	MW	05/31	07/20	2604	Staff
--	--------------	------------------------------	---	-----------------	----	-------	-------	------	-------

	PSYCH 102-F2	Human Growth and Development	3	09:00am-11:50am	TTH	05/30	07/20	2600	Cornejo
--	--------------	------------------------------	---	-----------------	-----	-------	-------	------	---------

	PSYCH 102-S1	Human Growth and Development	3	12:30pm-03:20pm	TTH	06/13	08/03	2604	Staff
--	--------------	------------------------------	---	-----------------	-----	-------	-------	------	-------

PSYCH-203 Abnormal Psychology (IAI: PSY905) Prerequisite: PSYCH 101

	PSYCH 203-F1	Abnormal Psych	3	12:30pm-03:20pm	TTH	05/30	07/20	2600	Cornejo
--	--------------	----------------	---	-----------------	-----	-------	-------	------	---------

Reading

RDG 098 is a course designed for those whose assessment scores indicate a need for additional work. Students are required to take the COMPASS test and should check with the Counseling and Academic Advising Center for the testing schedule.

RDG-098 Foundations of College Reading Prerequisite: Placement into RDG 098 or higher

	RDG 098-F1	Foundations of College Reading	4	09:00am-12:50pm	TTH	05/30	07/20		Staff
--	------------	--------------------------------	---	-----------------	-----	-------	-------	--	-------

Sociology

SOCIO-101 Introduction to Sociology (IAI: S7900) Prerequisite: Placement into ENG 099 or higher

☞	SOCIO 101-INF1	Introduction to Sociology	3			05/30	07/20	Online	Mulling
---	----------------	---------------------------	---	--	--	-------	-------	--------	---------

\$20 Internet course fee

☞	SOCIO 101-INF2	Introduction to Sociology	3			05/30	07/20	Online	Mulling
---	----------------	---------------------------	---	--	--	-------	-------	--------	---------

\$20 Internet course fee

☞	SOCIO 101-INF3	Introduction to Sociology	3			05/30	07/20	Online	Mulling
---	----------------	---------------------------	---	--	--	-------	-------	--------	---------

\$20 Internet course fee

	SOCIO 101-F1	Introduction to Sociology	3	09:00am-11:50am	MW	05/31	07/20	2408	Mulling
--	--------------	---------------------------	---	-----------------	----	-------	-------	------	---------

	SOCIO 101-F2	Introduction to Sociology	3	09:00am-11:50am	TTH	05/30	07/20		De la Fuente
--	--------------	---------------------------	---	-----------------	-----	-------	-------	--	--------------

	SOCIO 101-S1	Introduction to Sociology	3	12:30pm-03:20pm	TTH	06/13	08/03	2408	Staff
--	--------------	---------------------------	---	-----------------	-----	-------	-------	------	-------

SOCIO-210 Marriage and the Family (IAI: S7902) Prerequisite: Placement into ENG 099 or higher

☞	SOCIO 210-INF1	Marriage/Family	3			05/30	07/20	Online	De la Fuente
---	----------------	-----------------	---	--	--	-------	-------	--------	--------------

\$20 Internet course fee

	SOCIO 210-F1	Marriage/Family	3	09:00am-11:50am	TTH	05/30	07/20	2408	Staff
--	--------------	-----------------	---	-----------------	-----	-------	-------	------	-------

No computer? We have many available for your use free of charge on campus.

Spanish

SPAN-101 Spanish I Prerequisite: Placement into ENG 099 or higher									
🔗	SPAN 101-INFI	Spanish I	4			05/30	07/20	Online	McCann
	\$20 Internet course fee								
	SPAN 101-SI	Spanish I	4	08:30am-12:20pm	TTH	06/13	08/03	2506	Staff
SPAN-102 Spanish II Prerequisite: SPAN 101 or 2 years of high school Spanish within the past 5 years; or qualifying score on Spanish placement test; or instructor consent									
🔗	SPAN 102-INFI	Spanish II	4			05/30	07/20	Online	McCann
	\$20 Internet course fee								
	SPAN 102-SI	Spanish II	4	08:30am-12:20pm	MW	06/12	08/03	2506	Staff

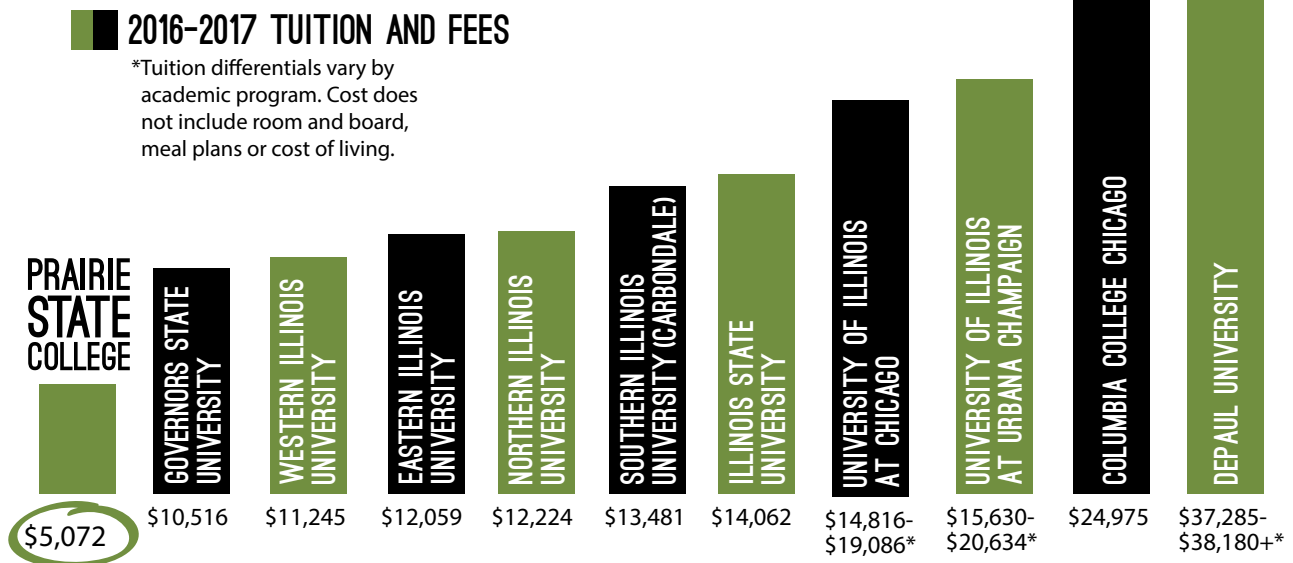
Surgical Technology

SRT-298 Surgical Technology Seminar Prerequisite: Acceptance into Surgical Technology program \$50 lab fee \$300 health course fee									
	SRT 298-FI	Surg Tech Seminar	4	08:00am-11:50am	MT	05/30	07/20	L180	Wedster
	Concurrent registration in SRT 299								
SRT-299 Applied Surgical Procedures IV Prerequisite: Acceptance into Surgical Technology program \$150 health course fee									
	SRT 299-FI	Appl Surg Procedures IV	2	07:00am-03:00pm	WTHF	05/31	07/20	OTH	Wedster
	SRT 142 and concurrent registration in SRT 298								

Welding

WELD-268 Advanced Independent Projects Prerequisite: WELD 215 with a C or better \$65 lab fee									
	WELD 268-FI	Advanced Independent Projects	3	06:00pm-09:40pm	T	05/30	07/18	T186	Wolfe

YOU SAVE **BIG** WHEN YOU CHOOSE PRAIRIE STATE COLLEGE FIRST!



State tuition rates and fees courtesy of The Illinois Association for College Admission Counseling (in-state information only).

Registration Form for Credit Courses

\$10 non-refundable registration fee per semester.

Complete this form before registering on campus. New students **must** register in person, after meeting with an advisor/counselor for academic advising assistance and approvals. Continuing students may register in person, or on WebAdvisor at prairiestate.edu but are encouraged to seek advising assistance to ensure accuracy of course selection. All students are invited to visit the Counseling and Academic Advising Center. Call (708) 709-3506 if you have any questions.

Please Print

_____ Student ID Number

_____ Last Name First M.I.

_____ *Street Address

_____ City State Zip Code County

*I understand that if the address reflected above is different than the one on record with the College, my mailing address and residency tuition rate may be adjusted accordingly.

_____ Area Code Home Phone

Gender: Male Female Date of Birth _____
Month/Day/Year

Declare or verify your major below
_____ Program Major**
**(see degree descriptions on reverse side)

Course Code/Number	Section	Credit Hours	Time	Day	Lab Fee
PHOTO 171	02	3	7-9:30PM	MWF	\$50

To calculate your total bill, use the following formula:

Total Hours _____ x Tuition Rate _____ + Total Lab Fees _____ + Registration Fee \$10 =
(if applicable) (non-refundable)

I certify that I reside at the address provided above.
I accept responsibility for the selection of courses as indicated above.
I authorize the Business Office to collect any and all fees associated with my account.
If dropped for non-payment, a \$25 non-refundable re-enrollment fee may apply.

Signature _____ Date _____

Term
 Spring 20__ Summer 20__ Fall 20__

Enrollment Status
 First-Time Student
 Continuing PSC Student
 Transfer Student
 Guest Student (Summer term)
 Dual Credit Student

Special Enrollment Status
If you are one of the categories listed below, you must submit additional documentation.
 Co-Op
 HS Student (Tuition waiver)
 Works in District

Ethnic Background
Are you Hispanic or Latino?
 Yes, Hispanic or Latino
 Not Hispanic or Latino

Please identify your primary racial/ethnic group. (Please check one)
1. American Indian or Alaska Native
2. Asian
3. Black or African American
4. Hispanic or Latino
5. Native Hawaiian/Pacific Islander
6. White
7. Choose not to respond

Are you from one or more of the following racial groups?
(Select all that apply)
 American Indian or Alaska Native
 Asian
 Black or African American
 Native Hawaiian/Pacific Islander
 White
 Choose not to respond

Are you in the United States on a Visa-Nonresident Alien?
 Yes on a Visa - Type _____
Provide country of origin _____
 Not on a Visa

My primary goal for attending community college is (please check one):
11. To prepare for transfer to a four-year college or university
12. To improve skills for my present job
13. To prepare for a future job immediately after attending

Community College Certificate or Degree Objective:
1. Only complete one or several courses
2. To complete a certificate
3. To complete an Associate's degree

Employment Status
31 Employed full-time
32 Employed part-time
34 Homemaker
35 Unemployed

For Office Use Only

I have been advised of reading, English, and math requirements.

_____ Student Initials

_____ Advisor Signature

_____ Registration Clerk/Date

_____ Registered Hours